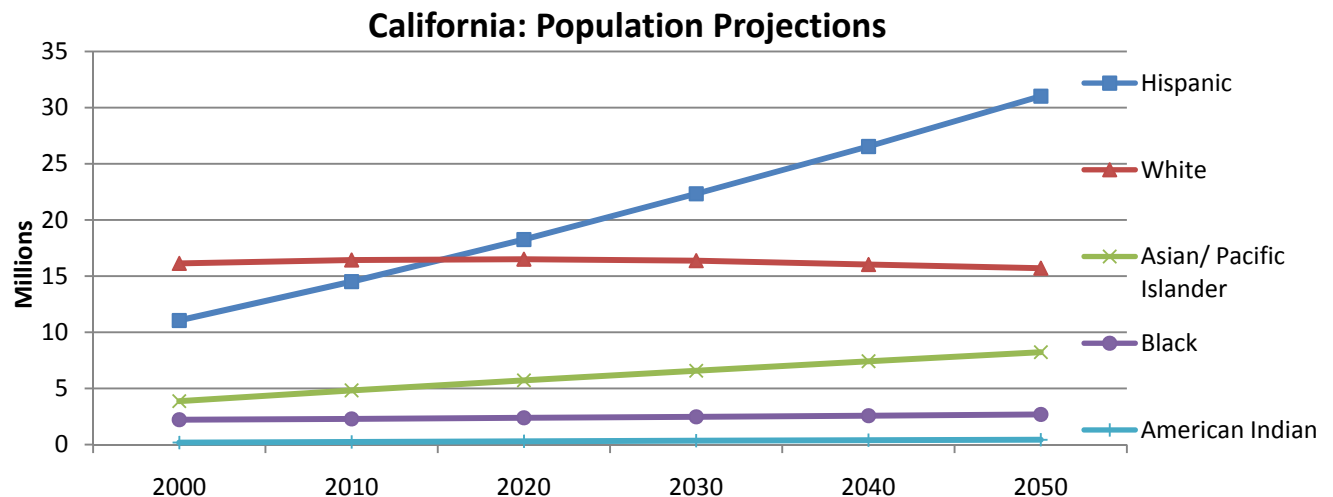


Indicators: Background on Demographics

The size and make-up of California's population – particularly the age of residents – impacts the size of the state's workforce, the type of public services that are needed and the costs of providing those services. As the state's population ages, for example, there will be greater need for health care services for older residents, which often are funded with public dollars. Changing demographics, particularly growth of the state's Latino population, means public programs must fortify their capacity to address educational and poverty disparities that impact that population.

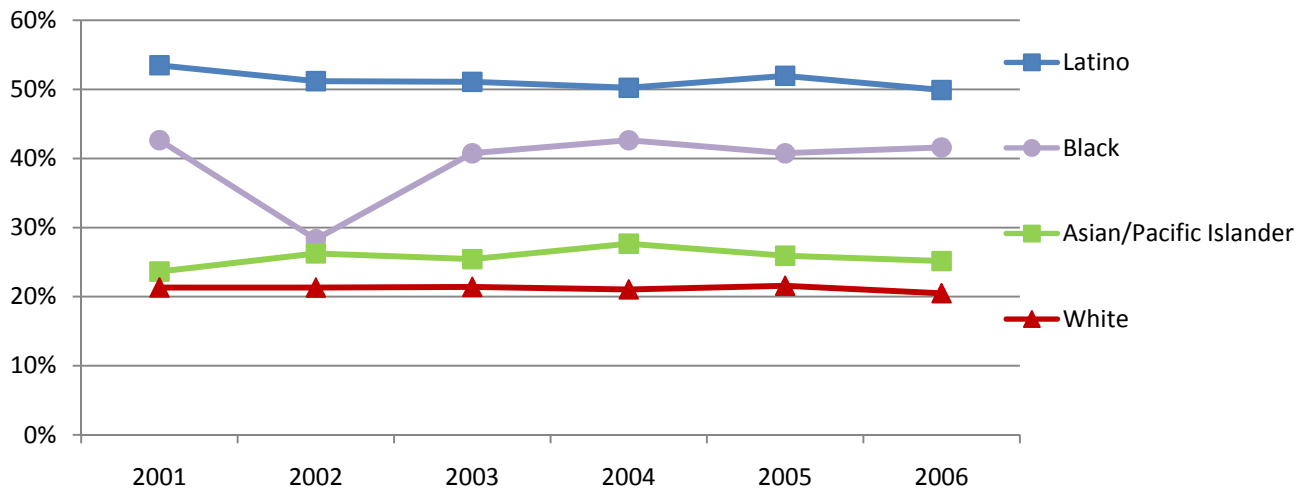
- California's population will continue to grow through the year 2050. The state is currently home to 35.9 million people and will grow to 60 million by 2050.
- The state's Latino population is the fastest growing segment of the overall population. Latinos will represent the largest single ethnic group by 2020 and more than half the population by 2050.



Source: California Department of Finance.

- California's population is aging. In 2000, more than half (51.4 percent) of Californians were of working age (18 years to 54 years old). By 2020, that figure will be reduced to 46 percent and the number of older Californians (55 or older) will grow from 18.4 percent to 26.6 percent.
- Over the next 40 years, population growth will occur the fastest in the counties of Sutter, Yuba, Madera, Kern, San Joaquin, Merced, and Placer. Although these counties are relatively small compared to other areas, such as the Bay Area and Los Angeles, these counties are expected to grow by 200 percent to 250 percent by 2050. Riverside County also is expected to grow at a fast pace, and because of its current large population base, it will rank second to Los Angeles County in population size by 2050.
- High poverty rates among the fast growing Latino population signal future challenges. The percentage of Latinos and African Americans earning less than 200 percent of the poverty level continues to be high.

Californians Earning Less than 200 Percent of Poverty Level



Source: California Population Survey Report.